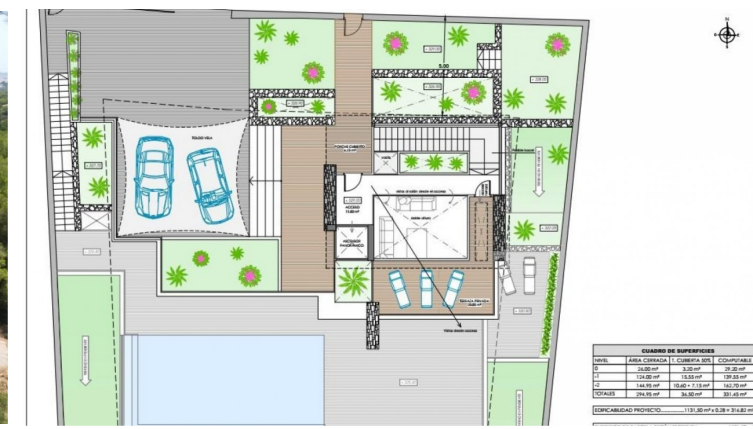








**BOLIG ID: MLC-MLSC6628794**



CUADRO DE SUPERFICIES			
NIVEL	ÁREA CERRADA	T. CUBIERTA 50%	COMPUTABLE
0	124.00 m²	3.20 m²	127.20 m²
-1	124.00 m²	15.55 m²	139.55 m²
-2	144.95 m²	10.60 + 7.15 m²	162.70 m²
<b>TOTALES</b>	<b>294.95 m²</b>	<b>36.50 m²</b>	<b>331.45 m²</b>

EDIFICABILIDAD PROYECTO: 1131,50 m² x 0,28 = 316,82 m²



CUADRO DE SUPERFICIES			
NIVEL	ÁREA CERRADA	T. CUBIERTA 50%	COMPUTABLE
0	26.00 m²	3.20 m²	29.20 m²
-1	124.00 m²	15.55 m²	139.55 m²
-2	144.95 m²	10.60 + 7.15 m²	162.70 m²
<b>TOTALES</b>	<b>294.95 m²</b>	<b>36.50 m²</b>	<b>331.45 m²</b>

EDIFICABILIDAD PROYECTO: 1131,50 m² x 0,28 = 316,82 m²



# Grund til salg i Altea

€115,000

It is a south facing plot with incredible views in Altea Hills. In its western boundary there is a plot of Green Zone owned by the City Council of Altea and there are also no urban plots above it since it is rustic land. Its surface is 1,131.50m<sup>2</sup> although in cadastre it appears a little more 1,196m<sup>2</sup>. On the plot you can build an isolated detached...



0 m<sup>2</sup>



1132



0



0



+34 609 97 72 62



[www.bolig-udland.dk](http://www.bolig-udland.dk)



[info@bolig-udland.dk](mailto:info@bolig-udland.dk)